

'Great oaks from little acorns grow'

**Autumn Term (2) 2024**  
**Week 5 & 6**



**Llangrove CE  
Academy Vision &  
Ethos**

**"A tree is known by the  
kind of fruit it bears."**

– Matthew 12 v33

**"Keep your roots deep in Him and your  
lives built on Him."**

– Colossians 2:7

Our **ACORNS** focus for  
this half term is  
**CREATIVITY**



**Superstars**

Creativity	Wk 5	Wk 6
Acorn Class:	Eli	Dougal
Beech Class:	Eska	Dylan J
Maple Class:	Annabell	Nia
Oak Class:	Arthur	Thea



**Team of the Week**



Wk 5	Wk 6
<b>WYE</b>	<b>WYE</b>



**Sports Stars**

	Wk 5	Wk 6
Acorn Class:	Harvey & Asawin	Gwen
Beech Class:	Millie	
Maple Class:	Woodrow	
Oak Class:	Mel	Finlay

**Lunchtime Table of the Week**

Wk 5	Wk 6
	



**Ladder Club Legends**

Beech Class:	Y2: Dylan, Olivia, Neve, Ari, Finley, Jacob S, Luna, Tom & Issy Y3: Jazmine & Max
--------------	--



**December Birthdays...**

Eliza  
Lottie  
Lily

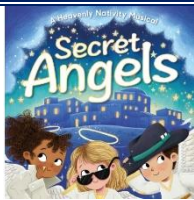


**Rudolph Fun Run for St. Michaels Hospice 2024 – Friday 6<sup>th</sup> December**

A fun, energetic, very cold morning was spent running in our reindeer antlers. We found our rhythm with Christmas music and so far, have raised over £240 for local charity St. Michaels Hospice. Well done every reindeer!







### Acorn & Beech Class 'Secret Angels' Nativity ~ Wednesday 11<sup>th</sup> December

Acorn and Beech class did a fantastic job performing their Nativity 'Secret Angels'. They sang beautifully, remembered all their lines and did it all with a big smile on their face! We were very proud of all of you! Well done!



### Christingle, Christ Church ~ Thursday 12<sup>th</sup> December

Thank you to all who came to the Worship Council's Christingle service at Christ Church yesterday. It was lovely to share a service written by the children. A big thank you to Mrs Dodds leading our Worship Council throughout the year.



### Mental Health & Wellbeing and Online Safety Guidance

Mental health and well-being, along with using the internet safely and positively is a key message that we promote in Llangrove CE Academy throughout the year.



According to findings from the NHS, 1 in 5 children in England suffer from a probable mental health issue, with 420,000 treated for such problems every month 😊 With such high numbers of young people in need of mental health support, it's perhaps unsurprising that plenty of them have turned to using apps intended to help them through these kinds of challenges 📱

Unfortunately, there are plenty of risks associated with these services ⚠️ from data collection to a potentially unhelpful, impersonal experience. It can be difficult to know how to keep young users safe as they navigate these services, but this week's free guide provides expert advice on how to do exactly that, while also breaking down the specific safety concerns of mental health and wellbeing apps.



### School Post...

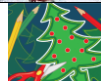
Please can any Christmas cards your child has written for their class mates/ school friends be brought into school by **Wednesday 18<sup>th</sup>** so that they can all be 'delivered' by the end of term.



### Llangrove Village 'Pupil' Post...

We have lots of post – from Llangrove villagers – that have been sorted ready for delivery. All of the classes will be delivering the rest next week.

All 'postage' donations made benefit the children's School Council fundraising pot. ☺



**Children's Christmas Crafts 'sale'**- the children have been busy making lovey Christmas crafts/decorations to 'sell' to parents/carers on the following days:

**Monday 16<sup>th</sup>** ~ Acorn & Beech Classes

**Tuesday 17<sup>th</sup>** ~ Maple & Oak Classes

School hall 3pm – 3:15pm

Staff & Governors Christmas hamper raffle tickets and the PTFA Calendar will be on sale too



### KS2 Christmas: Maple & Oak Class ~ Christ Church on Wednesday 18<sup>th</sup> December

1:30pm Matinee & 6pm Evening performance

**The dress rehearsal will take place on Tuesday 17<sup>th</sup> at 9:30am** ~ if you are unable to attend a performance on the 18<sup>th</sup> or if you have grandparents/family/ extended family that would love to see the performance too.



**Christmas Dinner Wednesday 18<sup>th</sup> December ~ Christmas lunch day**



**Christmas Party morning Friday 20<sup>th</sup> December** – children to wear Christmas jumper, party clothes or similar

We will be singing outside later in the day so please can the outfit for the day include coat, hat, scarves and gloves



### Christmas Carols...

A reminder that the pupils will be singing a selection of Christmas Songs from this year's productions in the **playground at 1.40pm on Friday 20<sup>th</sup> December.**

There will be mince pies, mulled wine, tea & coffee (from school staff & Llangrove PTFA). Please arrive **for 1:30pm**





## **2025 CALENDAR** **ON SALE**

Need ideas for Christmas presents? Order your calendar now!

**Only £5**

You can pay by BACS or cash. Calendars will be on sale at the Collective Worship at the end of the month or see a member of the committee at pick up. You can also order by paying by BACS and using Child's name as a reference.

Account name:  
Llangrove Parent Teachers  
and Friends Association

Sort Code: 30-94-14  
Account number: 02121515

Calendars will be on sale at the children's craft sale on

**Monday 16<sup>th</sup> & Tuesday 17<sup>th</sup> December,**  
as well as **Friday 20<sup>th</sup>**  
at the school 'outdoor' carol concert.



<https://www.easyfundraising.org.uk/causes/llangrove-ptfa>

The PTFA have an account with easyfundraising, so it's never been easier to donate!

Sign up today or add Llangrove PTFA as your cause. Shop on all your favourite sites, knowing you also donating to the PTFA with no additional costs to yourselves!



Scan the QR Code to find out more and sign up today!



Please note that ice-pops and popcorn will not be on sale on Friday 20<sup>th</sup> (last day of term)



## Dates for Your Diary - Autumn 2024



### December

<b>Monday 16<sup>th</sup></b>	<b>Children's Christmas Crafts sale (&amp; Christmas hamper raffle)</b> ~ Acorn & Beech Classes School hall 3pm – 3:15pm
<b>Tuesday 17<sup>th</sup></b>	<b>Maple &amp; Oak Classes' Christmas performance dress rehearsal @9:30am</b> ~ if you are unable to attend a performance on the 18 <sup>th</sup> or if you have grandparents/family/extended family that would love to see the performance too.
	<b>Children's Christmas Crafts sale (&amp; Christmas hamper raffle)</b> ~ Maple & Oak Classes School hall 3pm – 3:15pm
<b>Wednesday 18<sup>th</sup></b>	<b>Christmas lunch day</b>
	<b>KS2 Christmas: Maple &amp; Oak Class ~ Christ Church</b> 1:30pm Matinee & 6pm Evening performance
<b>Friday 20<sup>th</sup></b>	<b>Christmas party day</b> – children to wear a Christmas jumper, party clothes or similar We will be singing outside later in the day so please can the outfit for the day include coat, hat, scarves and gloves
	<b>End of term &amp; Christmas Carol concert</b> (outside weather permitting) @ 1:30pm, with mulled wine, tea and coffee from Llangrove PTFA <b>End of Autumn term at 2pm</b>



## Dates for Your Diary - Spring 2025



### January

<b>Monday 6<sup>th</sup></b>	<b>STAFF INSET day</b>
<b>Tuesday 7<sup>th</sup></b>	<b>Spring term (1) begins</b>
<b>Thursday 30<sup>th</sup></b>	<b>Young Voices, Birmingham</b> – Maple & Oak Class (plus other HMFA schools)

### February

<b>Thursday 13<sup>th</sup></b>	<b>Llangrove governors/trustees Board meeting</b> – 6:15pm
<b>Friday 14<sup>th</sup></b>	<b>End of Spring term (1)</b>
<b>HALF TERM Monday 17<sup>th</sup> – Friday 21<sup>st</sup> February</b>	

<b>Monday 24<sup>th</sup></b>	<b>Spring term (2) begins</b>
-------------------------------	-------------------------------

### March

<b>Thursday 6<sup>th</sup></b>	<b>World Book Day</b>
<b>Friday 21<sup>st</sup></b>	<b>Red Nose Day</b> – 'Do something funny for money'

### April

<b>Tuesday 8<sup>th</sup> or Wednesday 9<sup>th</sup></b>	<b>Moving Targets ~ Maple Class @ Courtyard Theatre (afternoon &amp; evening performance)</b> - TBC
<b>Friday 11<sup>th</sup></b>	<b>Easter service</b> @ 9am followed by tea & coffee
	<b>End of Spring (2) term</b> 2pm finish




### EASTER HOLIDAYS

**Monday 14<sup>th</sup> March – Friday 25<sup>th</sup> April**  
(Good Friday 18<sup>th</sup> April & Easter Monday 21<sup>st</sup> April)



## Dates for Your Diary - Summer 2025



Monday 28 <sup>th</sup> April	Summer term (1) begins
	
Monday 5 <sup>th</sup>	Bank Holiday – May Day & Llangrove May Fayre
Monday 12 <sup>th</sup> – Thursday 15 <sup>th</sup>	Year 6 SATs Assessment Week
Friday 23 <sup>rd</sup>	End of Summer (1) term
HALF TERM Monday 26 <sup>th</sup> – Friday 30 <sup>th</sup> May (Spring Bank Holiday: Monday 26 <sup>th</sup> May)	
	
Monday 2 <sup>nd</sup>	Summer term (2) begins
Monday 2 <sup>nd</sup> – Friday 13 <sup>th</sup>	Year 4 Multiplication Screening Check (2-week period)
Monday 9 <sup>th</sup> – Friday 13 <sup>th</sup>	Year 1 Phonic screening check (& Y2 retakes if required)
Thursday 12 <sup>th</sup>	Llangrove members/trustees Board meeting – 6:15pm
Friday 20 <sup>th</sup>	Sports Day – 1:15pm
Friday 27 <sup>th</sup>	Reserve Sports Day!
	
Friday 18 <sup>th</sup>	Last day of term (2pm finish)
Monday 21 <sup>st</sup>	STAFF INSET Day
SUMMER HOLIDAY	