

'Great oaks from little acorns grow'

Autumn Term (2) 2024
Week 7 & End of Term

Llangrove CE Academy Vision & Ethos

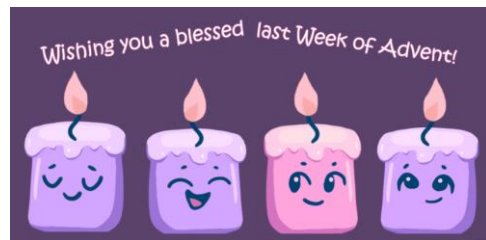
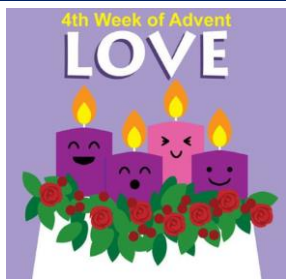


"A tree is known by the kind of fruit it bears." – Matthew 12 v33

"Keep your roots deep in Him and your lives built on Him." – Colossians 2:7

May the **Service** of the angels,
The **Opportunity** of the shepherds,
The **Resilience** of the wise men
& the **Creativity** of their gifts,
The **Achievement** of Mary and Joseph
& the **Nurture** of the Christ Child
Be yours this Christmas.

~ Oak Class



December Birthdays...
Eliza, Lottie & Lily



Autumn 1 = 97 %
Autumn 2 = 97 %

Maple Class Ukulele

In Maple Class, we were lucky enough to have ten ukulele lessons. We learnt a range of chords and how to change to the next chord quickly – this was very difficult! The children had great fun and learnt some new songs to sing aswell. A particular favourite is "Roller Ghoster". They all impressed the ukulele teacher by singing it wonderfully after only listening to it once! As part of our sessions, we had the chance to perform in front of the rest of the school. They were amazing! Maple Class parents can see the videos on Seesaw. I am so proud of them for performing and learning a new and difficult skill. Well done Maple Class!



Llangrove Village 'Pupil Post'....

All pupils spent Thursday afternoon delivering Christmas cards all around the village. All cards have been successfully delivered – despite us getting caught in a hail storm half way around!

Thank you to all who kindly donated. **£80 was raised for the School Council**



Children's Christmas Crafts 'sale' ...

The children were so proud to have their Christmas crafts on 'sale' this afternoon. Thank you for your contributions - all money goes towards resources for the children, including this week's Christmas activities & celebrations.



. KS2 Christmas: Maple & Oak Class ~ Christ Church on Wednesday 18th December

Maple and Oak Class' performances of 'The Greatest Story Ever Told' were absolutely brilliant. We hope you all enjoyed watching it as the children did performing it. They spoke clearly, acted fabulously and sang incredibly. We continue to be very proud of them all.



A HUGE thank you to the PTFA for the live online panto the whole school enjoyed on Wednesday.

Christmas Party Day...

There was great excitement when the children discovered that Father Christmas had delivered presents for them all – there was synchronised unwrapping and big smiles.

The children had lots of fun this morning: playing party games, becoming snowmen and playing together – there was even an elf in a box. Thank you to the PTFA for their Christmas chocolate gifts.



Christmas Carols...

What a wonderful end to the Christmas celebrations and autumn term. We didn't allow the rain to foil our plans. The children sang beautifully – the songs and PTFA's mulled wine and mince pies were delicious.



Mental Health & Wellbeing and Online Safety Guidance

Mental health and well-being, along with using the internet safely and positively is a key message that we promote in Llangrove CE Academy throughout the year.



Safety Over The Festive Season

With the Christmas holidays fast approaching, while everyone is looking forward to relaxing, and enjoying some well-earned rest with friends and family, it's still vitally important that we do all we can to safeguard children and young people in the festive period. However, it can be tricky to know what specific steps can be taken to ensure Christmas and the New Year is as calm and risk-free as possible, which is why National College has put together this week's WakeUpWednesday guide with expert advice on keeping youngsters safe over the festive season.



Christmas Holiday Reading...

We know that the Christmas holidays are a busy time, however, we would love if you could continue to record any reading your child does between now and the new term in their Reading Records – it may be a book or annual they find under the Christmas tree, instructions for a new game or a recipe for a Christmas treat ~ all the staff love to know 😊



Merry Christmas and Happy New Year

Thank you for all your support in
2024



We look forward to teaching and learning with your children in

Mrs Dean, Mr Fox, Mrs Rowson, Mrs Townson, Miss Harry, Mrs Gee, Mrs Deloyde, Miss Marchetto, Mrs Lane, Mrs Wilson, Mrs Pitman, Mrs Hew, Mrs Haggett, Mrs James, Mrs Thomas & Miss Maxfield.



News & upcoming Events



2025 CALENDAR ON SALE

Need ideas for Christmas presents? Order your calendar now!

Only £5

Account name:
Llangrove Parent Teachers
and Friends Association

Sort Code: 30-94-14
Account number: 02121515

You can pay by BACS or cash. Calendars will be on sale at the Collective Worship at the end of the month or see a member of the committee at pick up. You can also order by paying by BACS and using Child's name as a reference.



<https://www.easyfundraising.org.uk/causes/llangrove-ptfa>

The PTFA have an account with easyfundraising, so it's never been easier to donate!

Sign up today or add Llangrove PTFA as your cause. Shop on all your favourite sites, knowing you're also donating to the PTFA with no additional costs to yourselves!



Scan the QR Code to find out more and sign up today!

Llangrove, Ross-on-Wye
& Herefordshire Community...

Church Holiday Holiday Clubs 2024



*When - 23rd , 30th December
10.00a.m. until 4p.m.*

Where - Llangrove Village Hall

What - Games, Cooking, Activities, Crafts,

Cost - £10 a child a day or £20 for a family for a day

All welcome.

Helpers to include Wendy Price, Serena Warren

Please contact Wendy Price if your child is interested in joining in the fun.

Tel. No. 07596 897 962

email - wendyllangrove@gmail.com



Dates for Your Diary - Spring 2025



January

Wk 1	Monday 6 th	STAFF INSET day
	Tuesday 7 th	Spring term (1) begins
Wk 2	Monday 13 th	3:15-4:15pm (1 of 5)
	Wednesday 8 th	3:15-4:15pm (1 of 5)
Wk 3	Monday 20 th	3:15-4:15pm (2 of 5) PTFA Meeting – online @8pm
	Wednesday 22 nd	3:15-4:15pm (2 of 5)
	Friday 24 th	Celebration Collective worship - all parents/carers welcome. 9:10am With PTFA & School council Tea and Coffee
Wk 4	Monday 27 th	3:15-4:15pm (3 of 5)
	Wednesday 29 th	3:15-4:15pm (3 of 5)
	Thursday 30 th	Young Voices, Birmingham – Maple & Oak Class (plus other HMFA schools)

February

Wk 5	Monday 3 rd & Tuesday 4 th	Year 6 - Level 2 Cycling with Bikeright Herefordshire – details to follow
	Monday 3 rd	3:15-4:15pm (4 of 5)
	Wednesday 5 th	3:15-4:15pm (4 of 5)
Wk 6	Monday 10 th	3:15-4:15pm (5 of 5)
	Wednesday 12 th	3:15-4:15pm (5 of 5)
	Thursday 13 th	Llangrove governors/trustees Board meeting – 6:15pm
	Friday 14 th	End of Spring term (1) – 3:10pm / 3:15pm finish



HALF TERM Monday 17th – Friday 21st February






Wk 1	Monday 24 th	Spring term (2) begins 3:15-4:15pm (1 of 5)
	Wednesday 26 th	3:15-4:15pm (1 of 5)

March

Wk 2	Monday 3 rd	3:15-4:15pm (2 of 5)
	Wednesday 5 th	3:15-4:15pm (2 of 5)
	Thursday 6 th	World Book Day
Wk 3	Monday 10 th	3:15-4:15pm (3 of 5)
	Wednesday 12 th	3:15-4:15pm (3 of 5)
Wk 4	Monday 17 th	3:15-4:15pm (4 of 5)
	Wednesday 19 th	3:15-4:15pm (4 of 5)
	Friday 21 st	Red Nose Day – 'Do something funny for money'
Wk 5	Monday 24 th	3:15-4:15pm (5 of 5)
	Wednesday 26 th	3:15-4:15pm (5 of 5)
Wk 6	Monday 31 st	No After-school Club

April

Wk 6	Wednesday 2 nd	No After-school Club
	Monday 7 th	No After-school Club

Wk 7	Tuesday 8 th or Wednesday 9 th	Moving Targets ~ Maple Class @ Courtyard Theatre (afternoon & evening performance) – TBC
	Wednesday 9 th	No After-school Club
	Friday 11 th	Easter service @ 9am in Christ Church, followed by tea & coffee in the school hall End of Spring (2) term ~ 2pm finish
EASTER HOLIDAYS Monday 14th April – Friday 25th April (Good Friday 18 th April & Easter Monday 21 st April)		
 Dates for Your Diary - Summer 2025 		
Wk 1	Monday 28 th	Summer Term 1
		
Wk 2	Monday 5 th	Bank Holiday – May Day & Llangrove May Fayre
Wk 3	Monday 12 th – Thursday 15 th	Year 6 SATs Assessment Week
Wk 4	Friday 23 rd	End of Summer (1) term
HALF TERM Monday 26th – Friday 30th May ~ (Spring Bank Holiday: Monday 26th May)		
		
Wk 1	Monday 2 nd	Summer term (2) begins
	Monday 2 nd – Friday 13 th	Year 4 Multiplication Screening Check (2-week period)
Wk 2	Monday 9 th – Friday 13 th	Year 1 Phonic screening check (& Y2 retakes if required)
	Thursday 12 th	Llangrove members/trustees Board meeting – 6:15pm
Wk 3	Friday 20 th	Sports Day – 1:15pm
Wk 4	Friday 27 th	Reserve Sports Day!
		
Wk 5	Monday 30 th – Friday 4 th	
Wk 6	Monday 7 th – Friday 11 th	
Wk 7	Friday 18 th	Last day of term (2pm finish)
	Monday 21 st	STAFF INSET Day
SUMMER HOLIDAY		